

Layer Styles

1. Open Photoshop

-Open Adobe Photoshop CS5

2. Create a Letter Sized Document with CMYK Color

-from the *File* menu select *New*

-set the document options: Preset box: US Paper, Size: letter, Colour: CMYK

-click OK

3. Place a Picture in the Document

-from the *File* menu, select *Place*

-find the touchup image (Friends Edited)

-select the image and click Place

4. Resize, Rotate, and Move the Picture

-in *Free Transform* mode, position the mouse pointer OVER the corner control point.

Click and drag inwards to make the picture smaller

-in *Free Transform* mode, position the mouse ABOVE a control point. Turn the mouse to rotate the picture

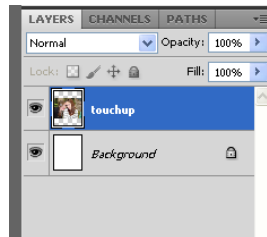
-When you like the way the picture looks, click the Commit Transform tool (✓) on the Options Bar. If you don't like the changes, click the Cancel transform tool (⌂)

-to move the picture, click anywhere on the image, and drag the mouse

Apply a shadow, glow, bevel, overlay, and stroke effect to a picture or text. This is done by setting the layer style. A layer style is an effect applied to all objects on a layer. Follow the instructions to make your picture stand out on the page by applying a layer style.

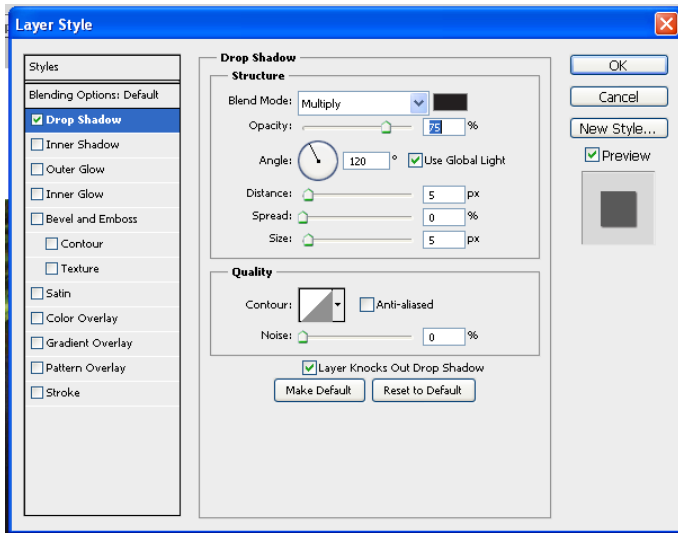
5. Apply a Layer Style to the Picture

-You can only edit the layer that is **SELECTED**. Click on the picture layer in the Layers palette



-from the Layer menu, select *Layer Style*

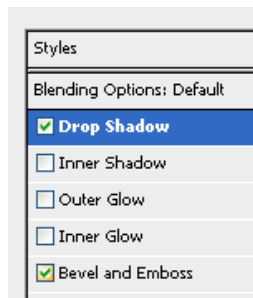
-select *Drop Shadow* from the Styles pane. Set the shadow options:



About the Options:

- **Blend Mode:** Mix the effect with the layers below (default looks the best)
- **Set Colour:** Select a colour for the effect from the colour spectrum
- **Opacity:** Set the density of the colour (0% is very light, 100% is very dark)
- **Angle:** Adjust the position of the effect
- **Distance:** Set the distance of the effect from the object
- **Spread:** Set the area that has a blur (0% is very blurry, 100% is not blurry)
- **Size:** Adjust the width of the effect
- **Anti-aliased:** Smooth the edges of the effect
- **Noise:** Smooth the fill of the effect (0% is very smooth, 100% is very dotty)

-from the Styles pane, apply another layer style by clicking inside a checkbox. Now set the options for the layer style



Tip: To remove a layer style, click inside the checkbox in the Styles pane to delete the checkmark


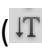
- **Drop Shadow:** Give depth to an image or text by applying a shadow to the outer edge of an object
- **Inner Shadow:** Make an image or text look recessed by applying a shadow to the inner edge of an object
- **Outer Glow:** Apply a color that emanates from the outer edge of an object
- **Inner Glow:** Apply a color that emanates from the inner edge of an object
- **Bevel and Emboss:** Make an image or text appear three-dimensional by applying highlighting and colors to the inside and outside edges of an object
- **Satin:** Apply shading over top of an object to give it a satiny finish
- **Colour Overlay:** Fill the layer with a colour
- **Gradient Overlay:** Fill the layer with a gradient
- **Pattern Overlay:** Fill the layer with a pattern
- **Stroke:** Outline the object on the layer with a colour, gradient, or pattern

-when finished, click OK

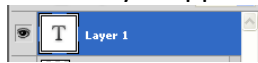
Add Text to the Page and then Apply a Layer Style

You are now going to add words to your scrapbook page that tell about the picture. You will then apply a layer style to the text layer to make the words look great!

-select the TOP layer in the Layers palette
(this will cause the text layer to appear at the TOP of the list)



-select either the Horizontal Type Tool () or Vertical Type Tool () from the Toolbox

-Click anywhere on the document. A text layer appears in the Layers palette



-type words to describe the picture

-the Options Bar displays tools for editing the font, size, alignment, color, and shape of the words. Click and drag to select the text and then format the text

-when you like the words, click the Commit any current edits tool  on the Options Bar.
If you don't like the changes, click the Cancel any current edits tool 

-from the Layer menu, select Layer Style. Select layer styles and their options, then click OK.

Save As

-from the *File* menu, select *Save As*

-save as *Page 2* in your Photoshop folder

-if a Photoshop Format Options box appears, place a checkmark in the Maximize compatibility box and then click OK.

Exit Photoshop

-click the Close button to exit the program